

CARE & MAINTENANCE FOR YOUR

# BrolleyExpress Umbrella Base



**MOBELLI**  
FURNITURE + LIVING

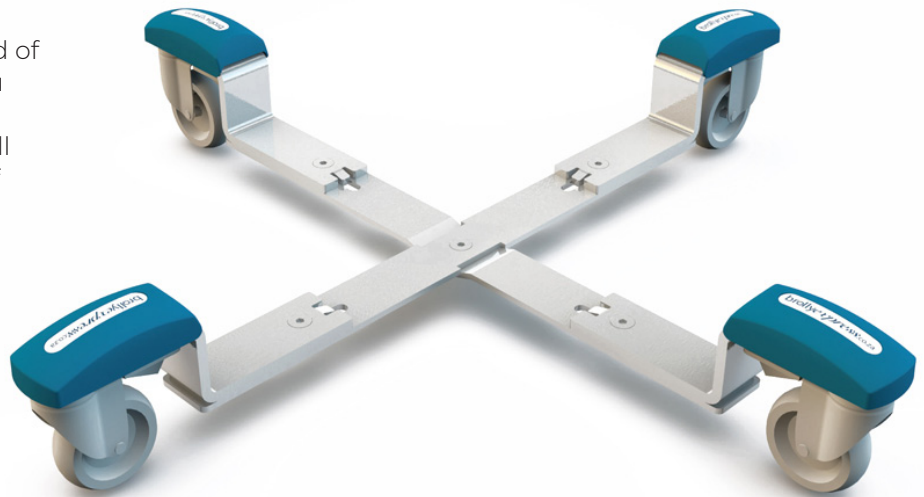
CARE & MAINTENANCE FOR YOUR

# BrolleyExpress Umbrella Base

## GUARANTEE

Please check your goods at the earliest opportunity for any defects or discrepancies and notify them to us by email or phone call as soon as possible after discovery of any problem.

BrolleyExpress® is guaranteed for a period of one year from the date of purchase. If you encounter any problem during this time, we will provide replacement parts, or a full replacement dependent on the nature of the defect or problem. If BrolleyExpress® has been found to have been used improperly, by being overloaded or misuse, we reserve the right charge for the cost of providing replacement parts. We recommend you take extra care when placing your umbrella base onto the trolley. If you take them on and off the trolley and adjust the size of BrolleyExpress®, please unclip the plastic caps to avoid damage.



Spares are available to order, please contact us on [sales@mobelli.co.za](mailto:sales@mobelli.co.za) to place an order for spare parts.

- Set of two plastic brakes which are fitted to the existing casters for the 45kg model
- Set of two metal brakes fitted to the existing casters for the 65kg model
- Set of four plastic caps



## CARING FOR YOUR BROLLEYEXPRESS®

1. Store your BrolleyExpress® in a garage or shed for the winter in a clean and dry condition.
2. Under no circumstances allow BrolleyExpress® to be used as a toy or other play device, particularly when loaded with the base and parasol as the combined weight is significant.
3. Children should not ride on BrolleyExpress® at any time.
4. Do not overload BrolleyExpress® or use it for any other purpose other than supporting your own base and parasol.
5. When loading and unloading your heavy base, take care not to damage the plastic caps.
6. In windy conditions, you should close your parasol to avoid damage.
7. When applying the brakes avoid kicking them.
8. It is very important that at first use and each year when BrolleyExpress® is packed away for the winter that it is sprayed with WD40 or similar product to protect the electroplated finish. Failure to do this will affect your guarantee.

Redefining the value of style

[mobelli.co.za](http://mobelli.co.za) | 0861 66 23 55

Paarden Eiland | Sea Point | Illovo | Fourways | Umhlanga Ridge